

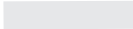


THE ART OF **PAPER**
CRAFT
TEMPLATES

Helen Hiebert

TEMPLATES

The symbols below relate to the templates on the next several pages. Note that mountain and valley folds are relative to the way your paper is oriented. This is especially important when using the templates that indicate which side of the paper should be faceup when you fold. In some situations, you might choose to orient your project paper differently from how I suggest.

KEY	
—————	Template cut line
- - - - -	Valley fold
- - - - -	Mountain fold
	Adhesive area

To go to the template(s) for a particular project, click on the project name in the list below.

[Blushing Tiger Card \(2 template pieces\)](#)

[Box-Top Interweave](#)

[Curved Flip Mechanism \(3 template pieces\)](#)

[Frog Variation \(4 template pieces\)](#)

[Floral Lantern](#)

[Inflatable Paper Votive](#)

[Mini Tunnel Book](#)

[One-Sheet Tree](#)

[Paper Twist](#)

[Peace Tree Card](#)

[Pop-Up Alphabet \(26 template pieces\)](#)

[Pop-Up Dragonfly \(2 template pieces\)](#)

[Reconstructed Bauhaus Exercise](#)

[Slice-Form Heart \(2 template pieces\)](#)

[Spring Shamrock](#)

[Star Top Box](#)

[Storytelling Mask](#)

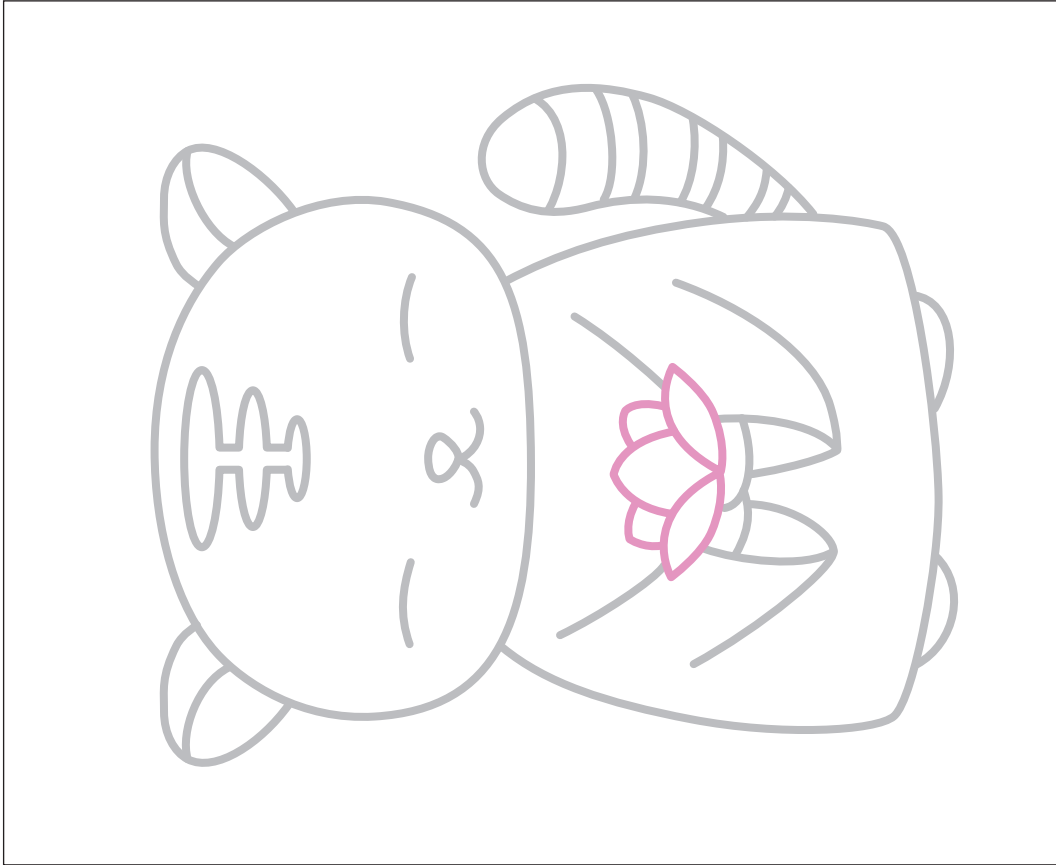
[Tiny House \(3 template pieces\)](#)

[Tyvek Lantern](#)

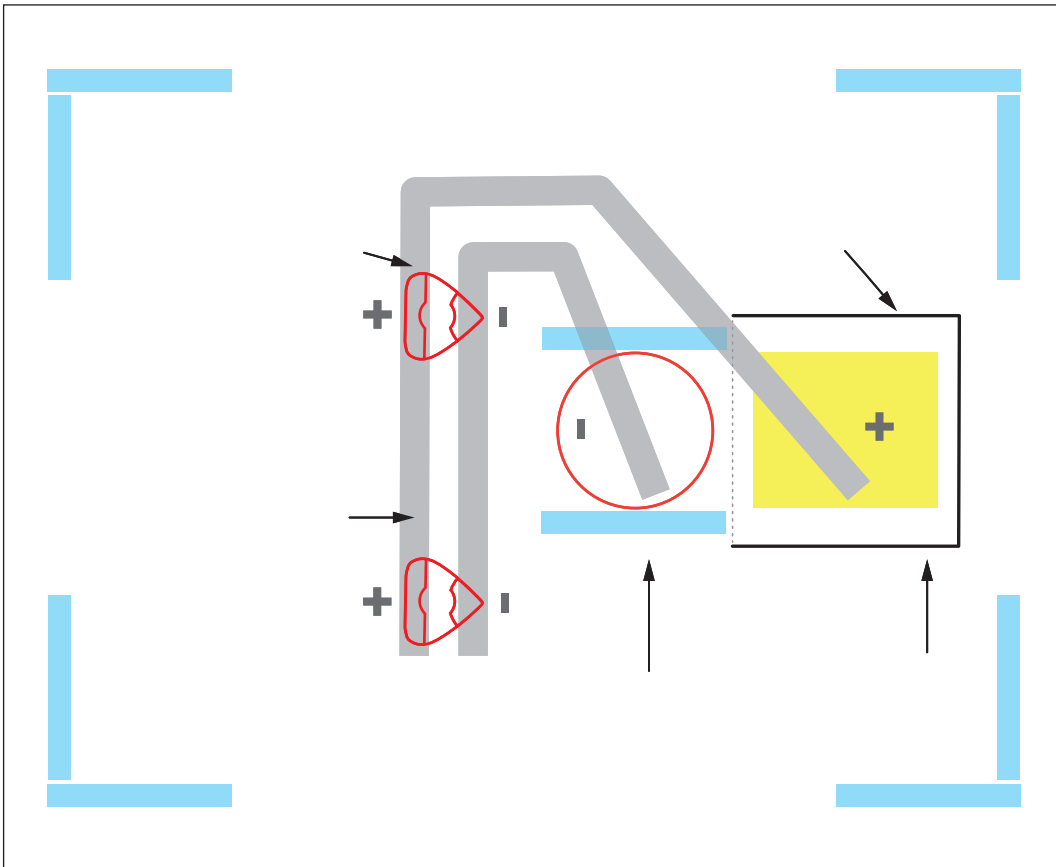
[Valentine Love Note](#)

BLUSHING TIGER CARD (PAGE 182)

Print at 100% on the display side of your paper. **Note:** There are two template pieces for this project.



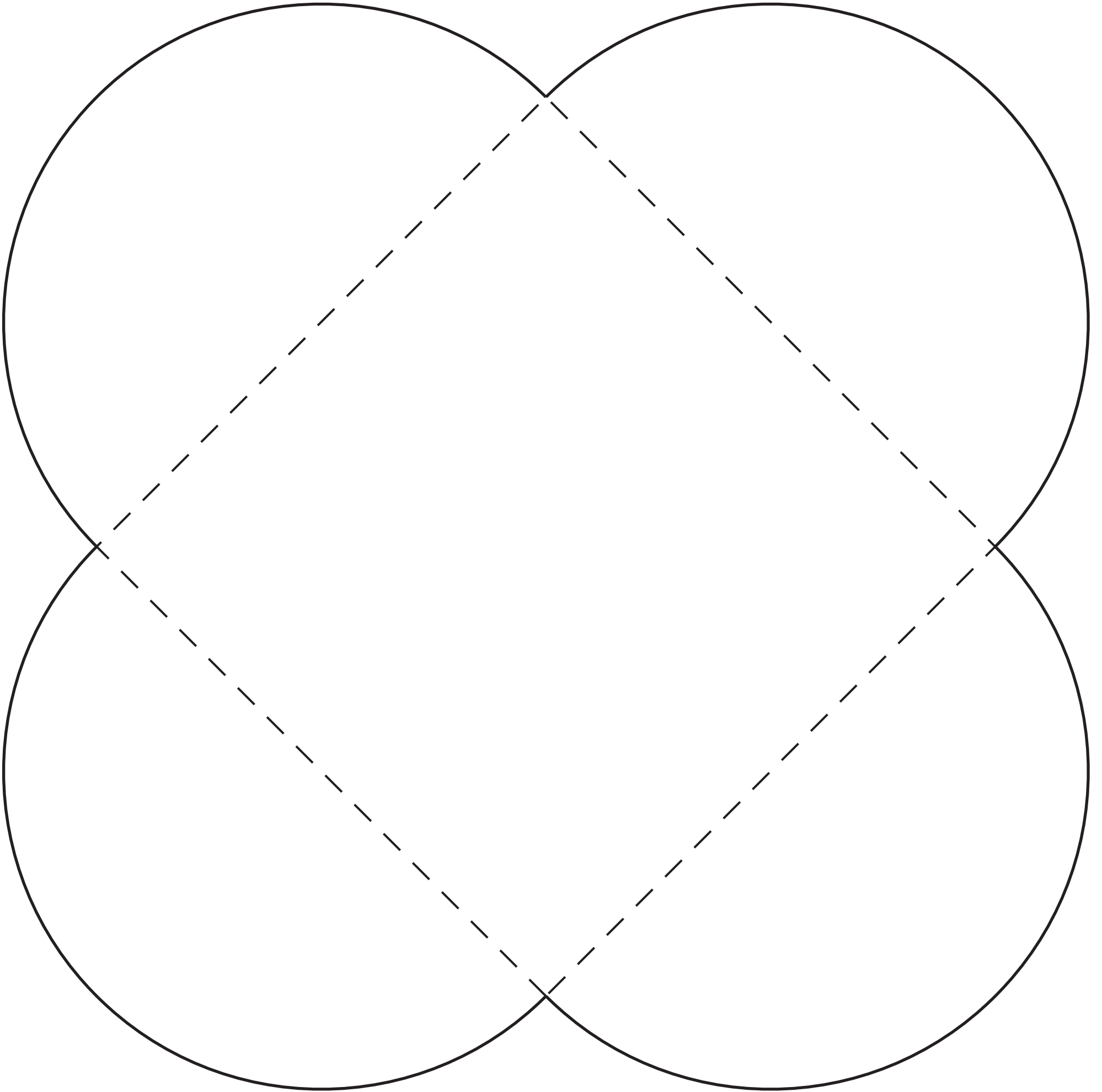
FRONT PIECE



CIRCUIT PIECE

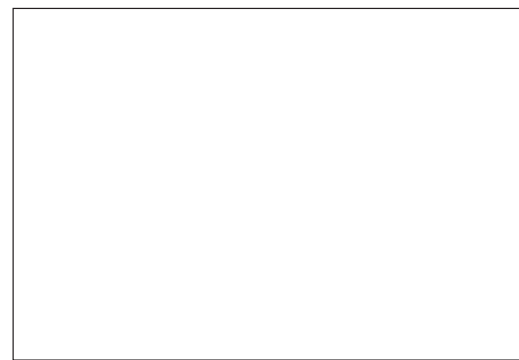
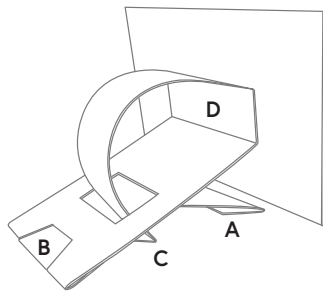
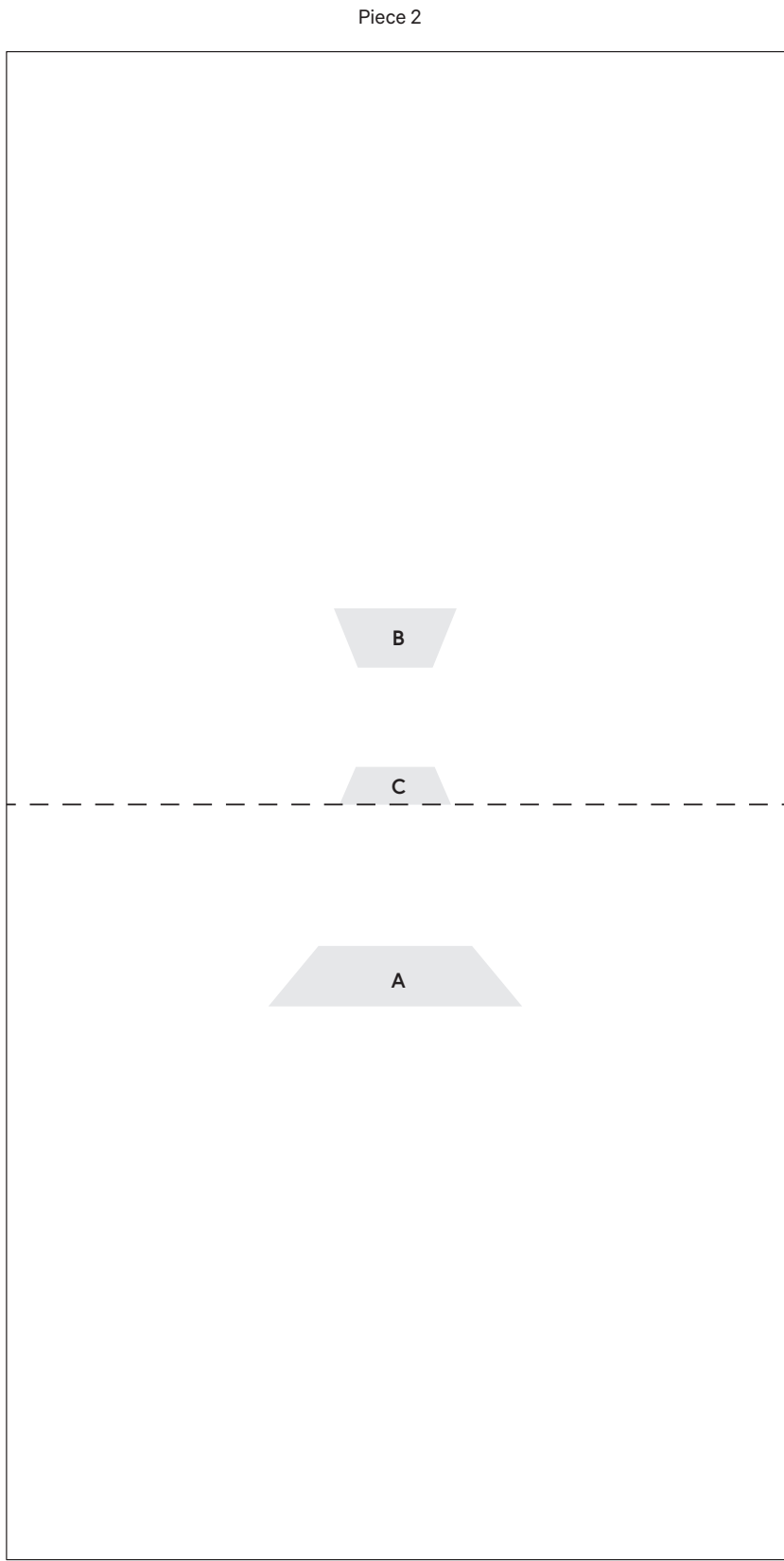
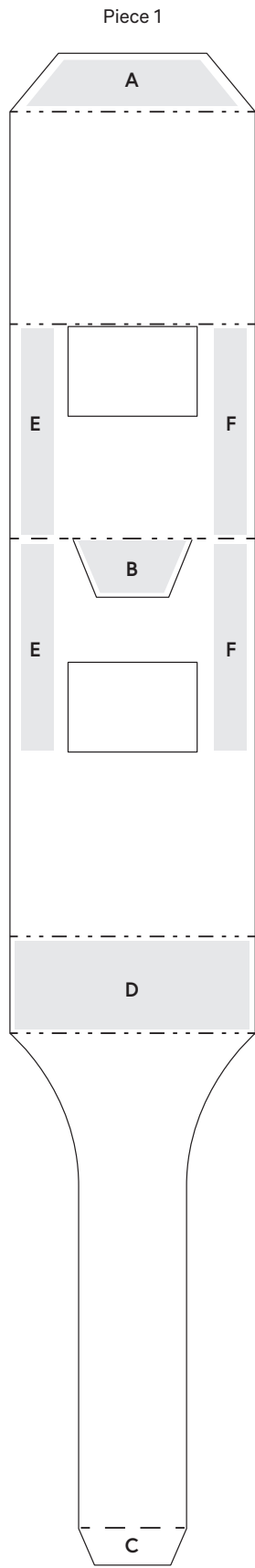
BOX-TOP INTERWEAVE (PAGE 268)

Print at 100% on the back side of your paper. **Note:** You will need one 11" x 17" sheet.



CURVED FLIP MECHANISM (PAGE 200)

Print at 100% on the back side of your paper. **Note:** There are three template pieces for this project.
You will need one 11" x 17" sheet.

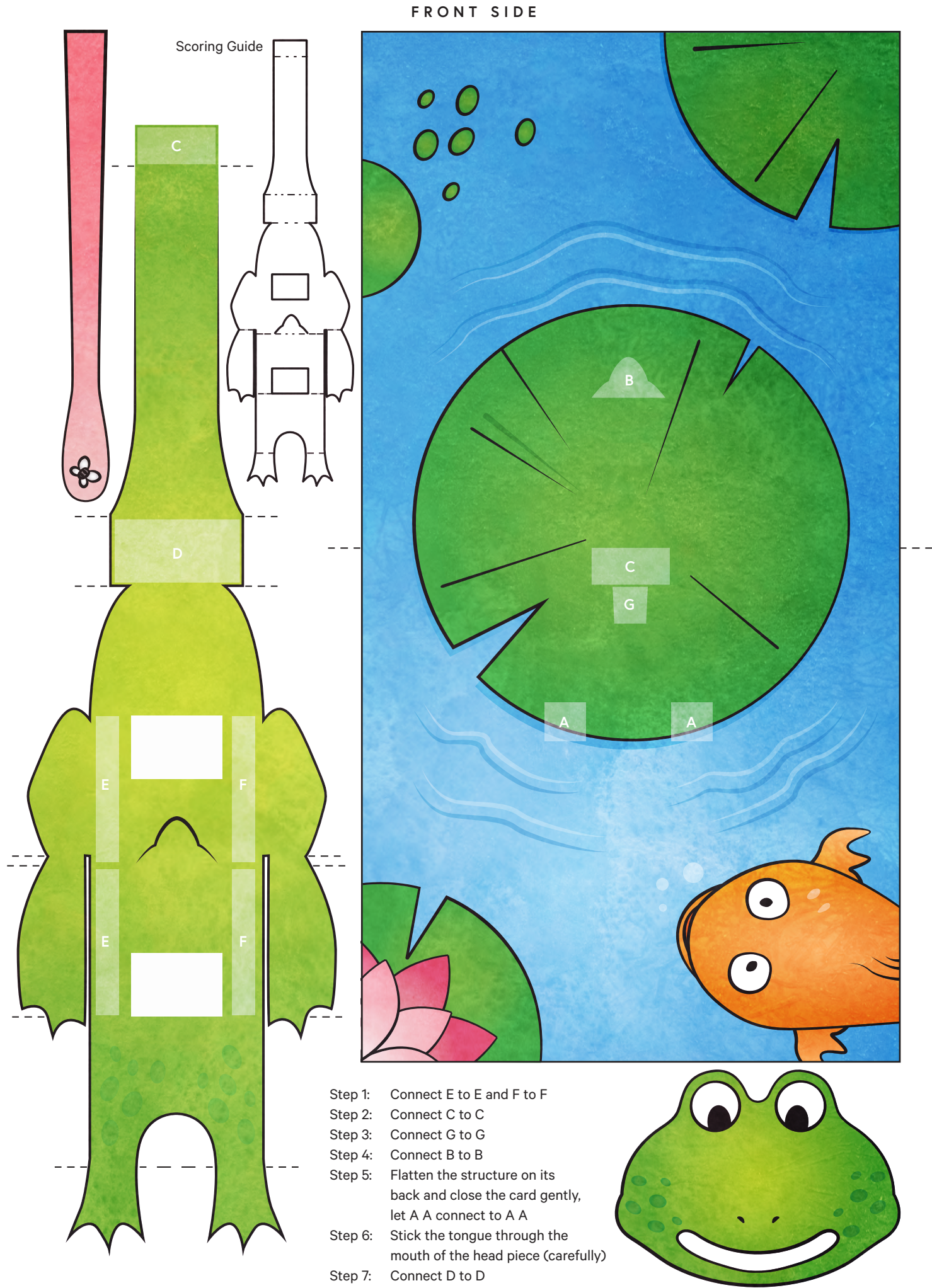


Piece 3

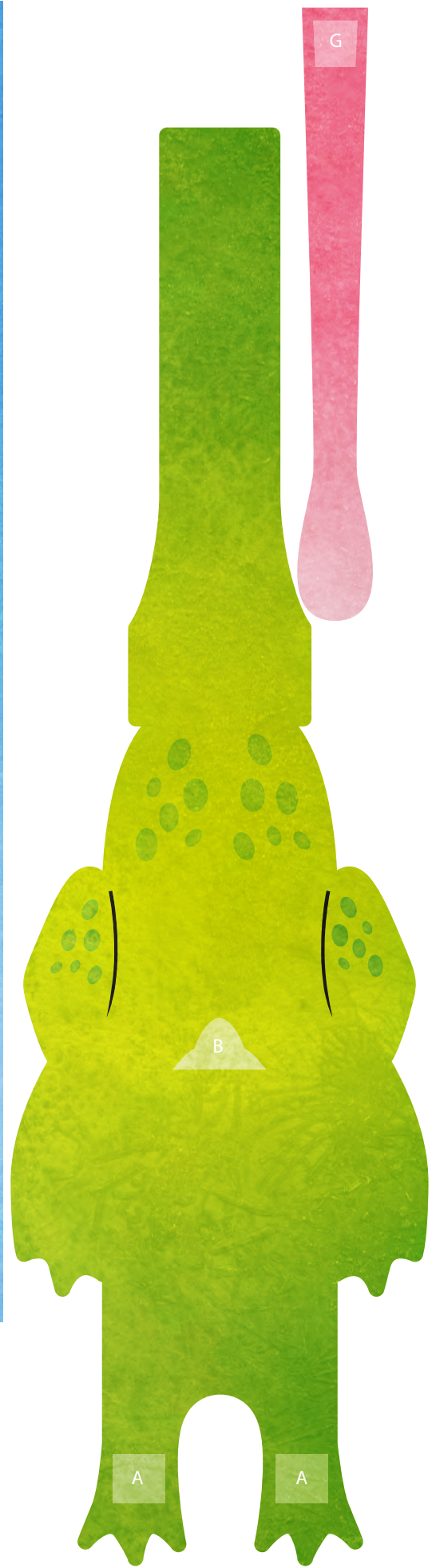
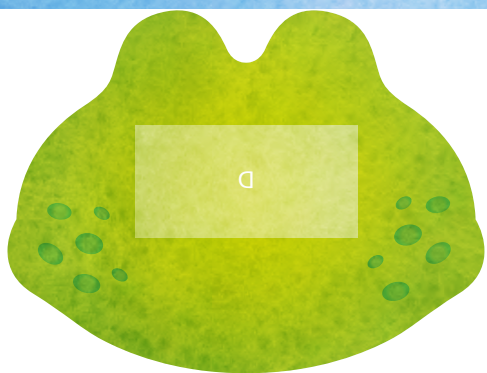
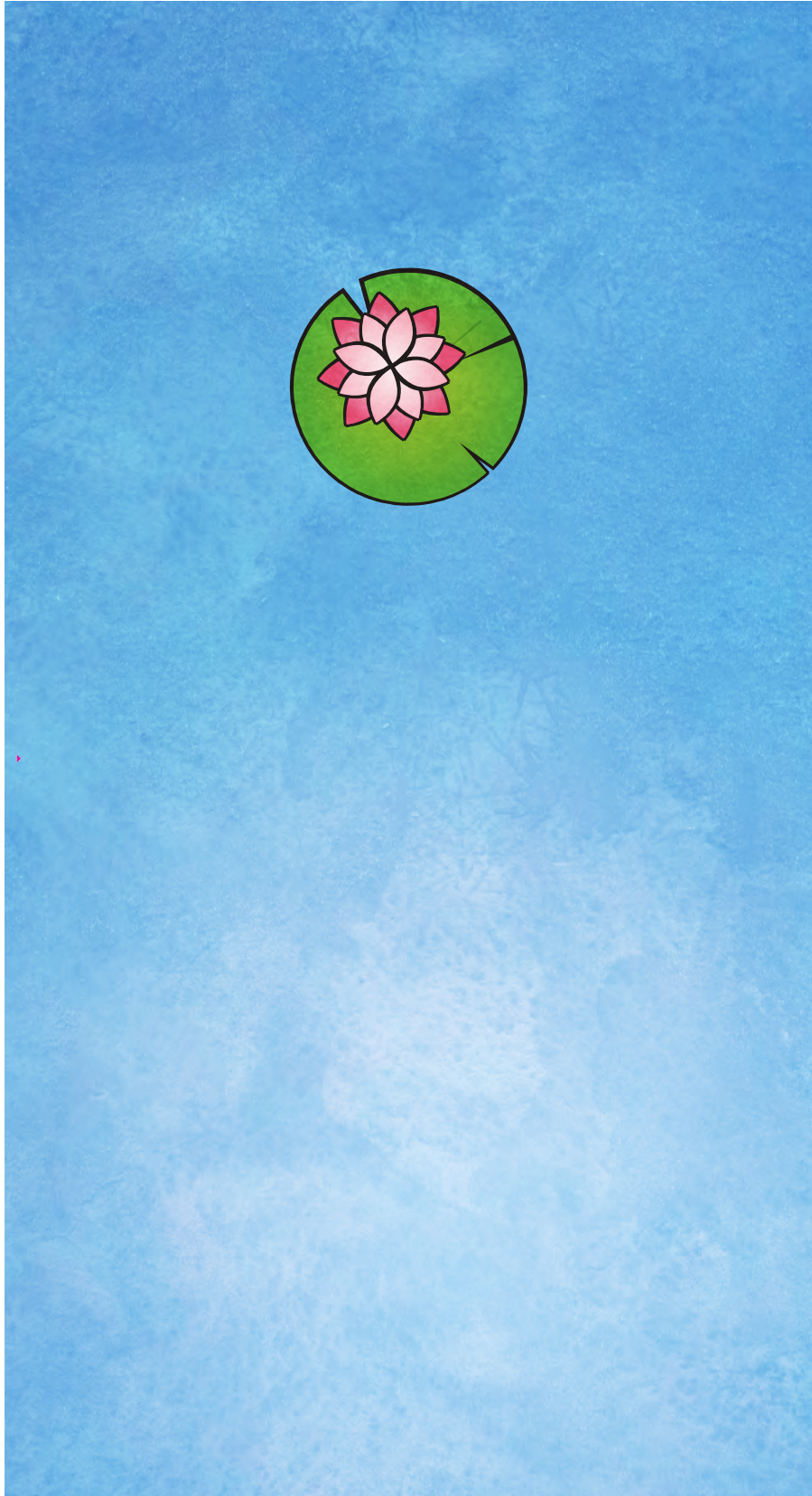
CURVED FLIP MECHANISM FROG VARIATION (PAGE 201)

Print at 100% **Note:** There are four template pieces for this project.

You will need one 11" × 17" sheet, printed on both sides.

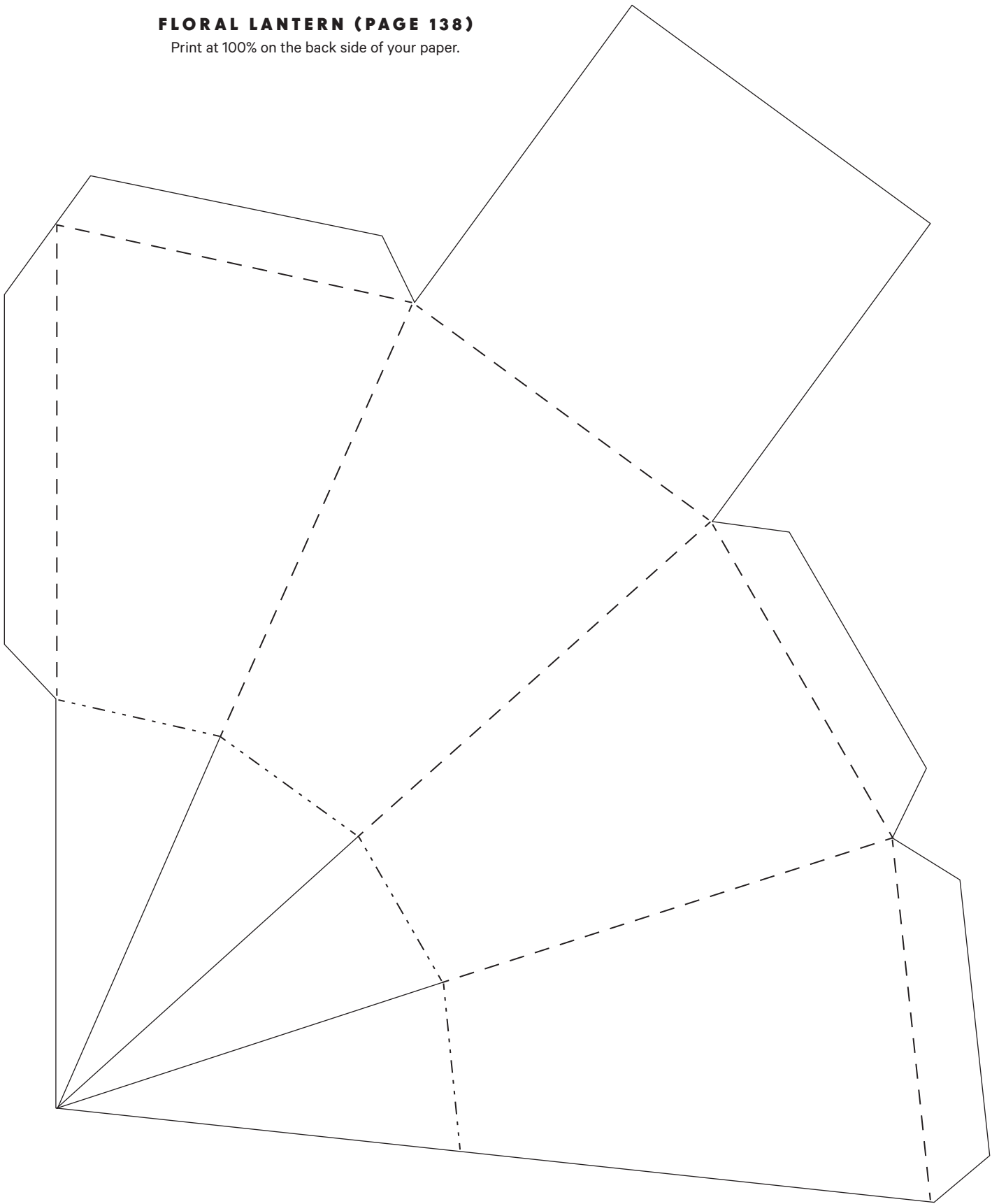


BACK SIDE



FLORAL LANTERN (PAGE 138)

Print at 100% on the back side of your paper.



INFLATABLE PAPER VOTIVE (PAGE 58)

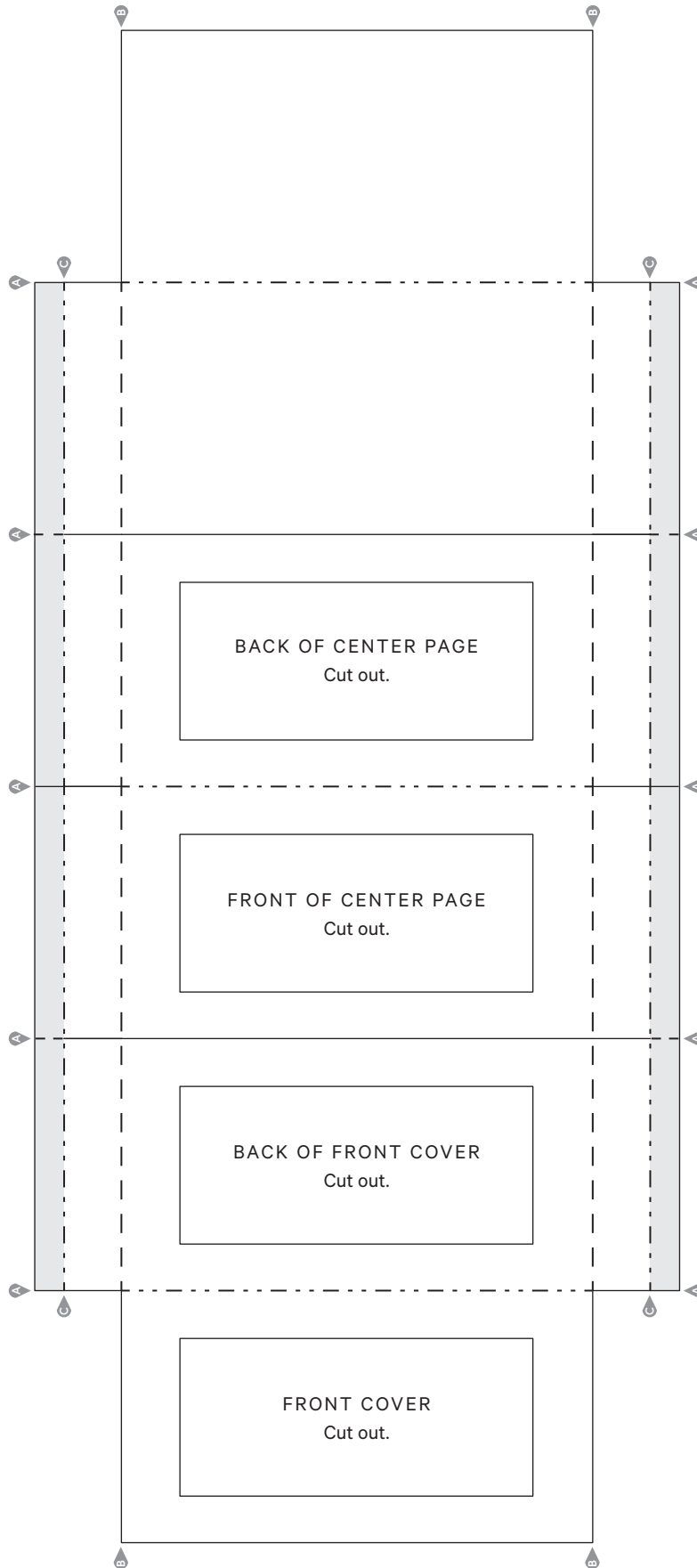
Print at 100% on the display side of your paper.

HOPE



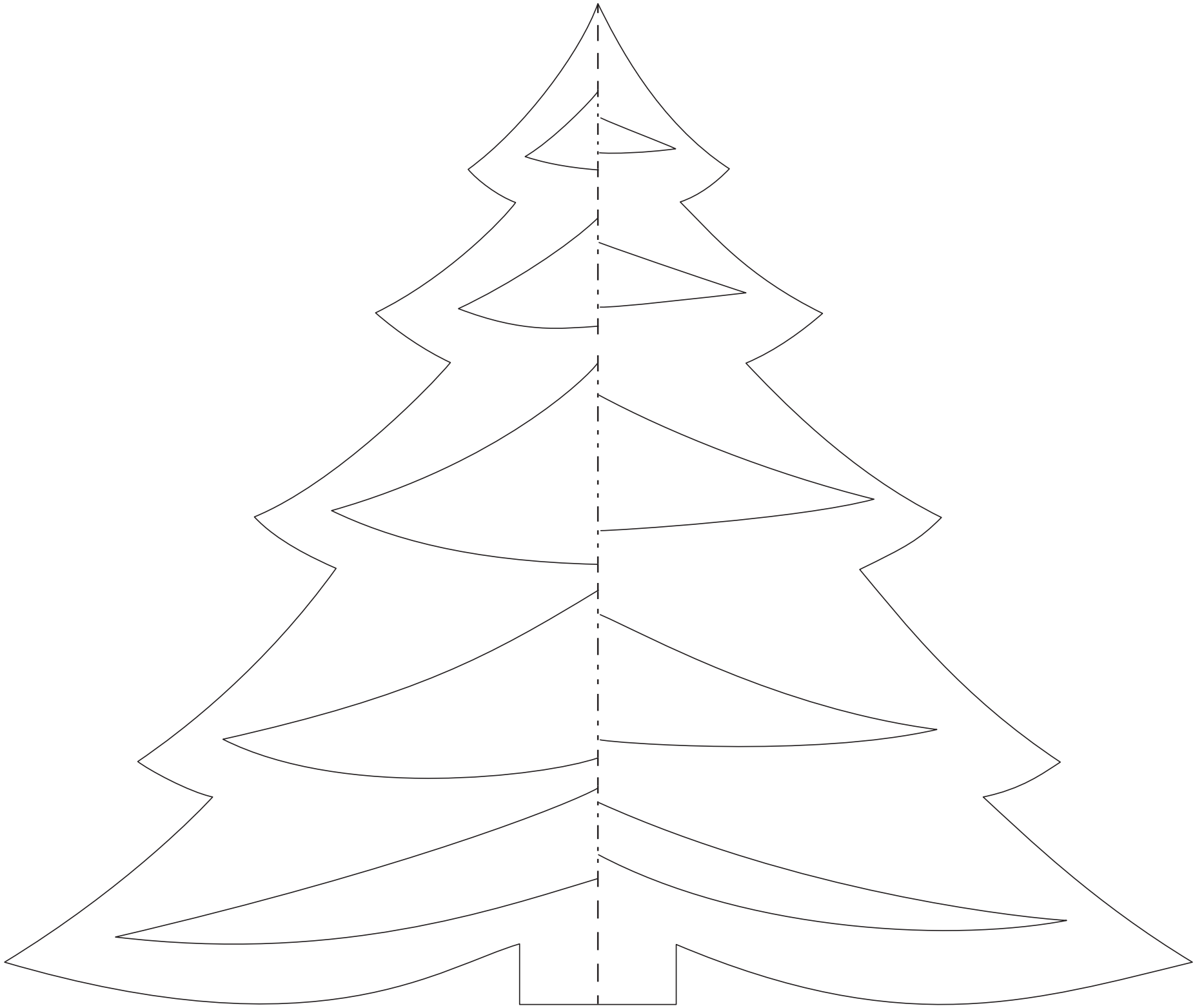
MINI TUNNEL BOOK (PAGE 174)

Print at 100% on the display side of your paper.



ONE-SHEET TREE (PAGE 112)

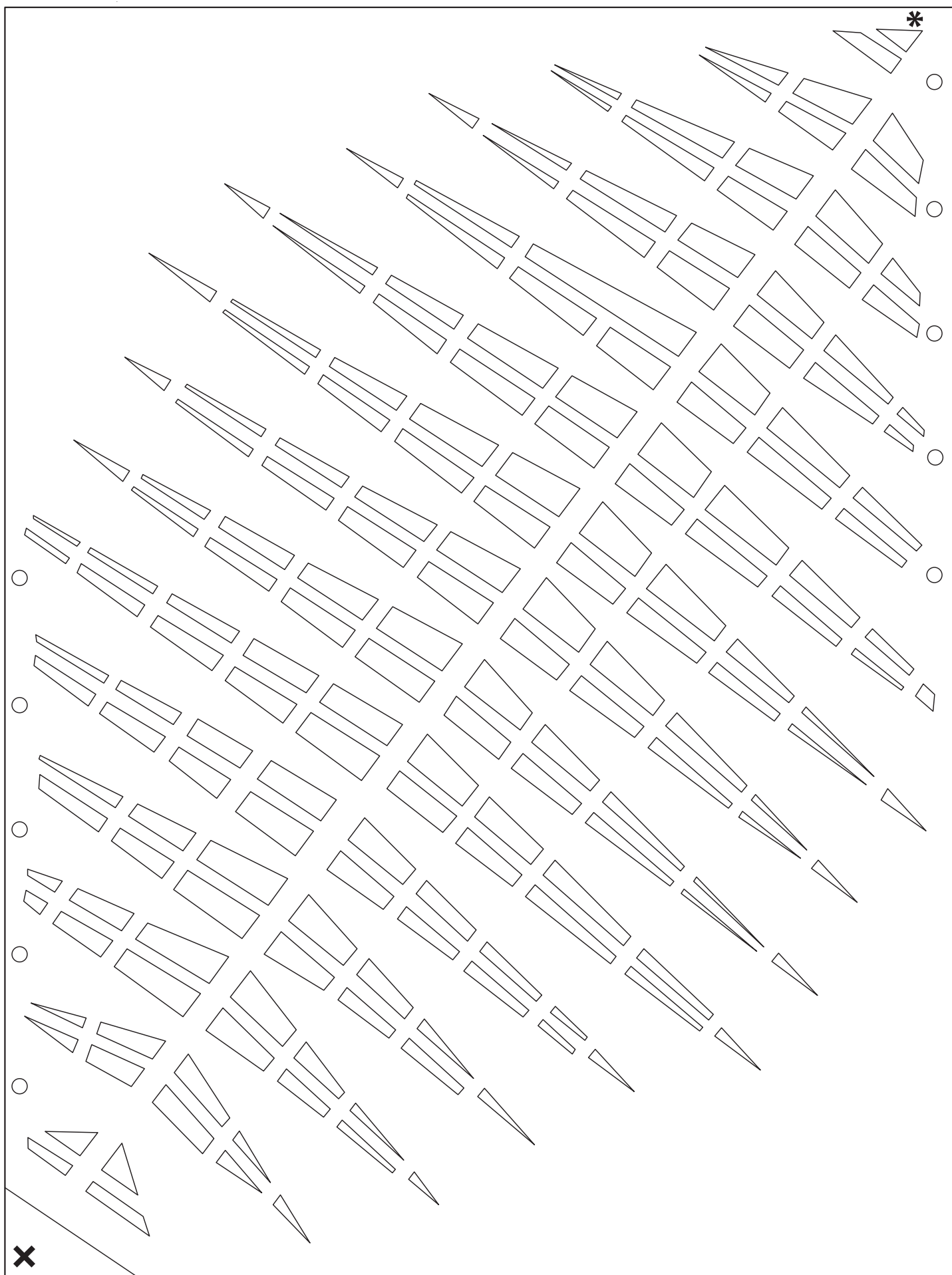
Print at 100% on the back side of your paper. **Note:** You will need one 11" x 17" sheet.



PAPER TWIST (PAGE 224)

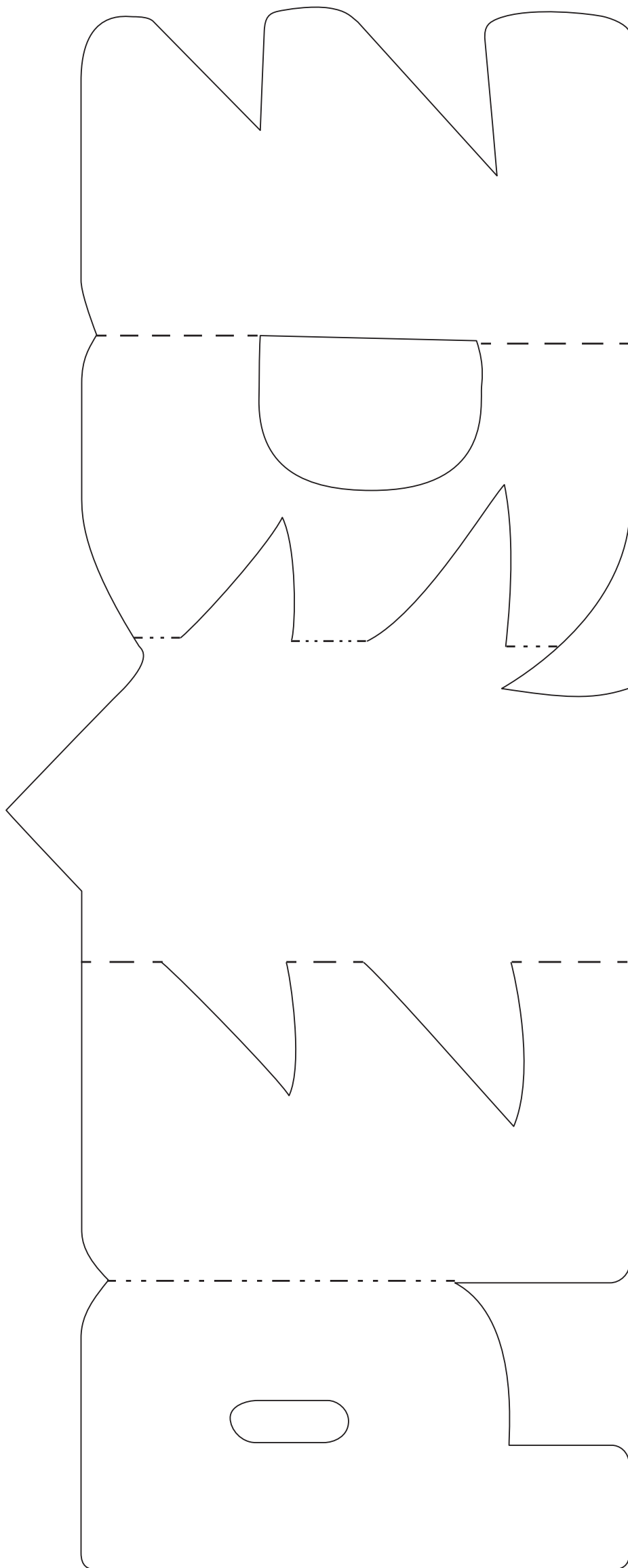
Print at 100% on the front side of your project paper. Or, simply use as a guide for cutting windows.

Note: You will need one 11" x 17" sheet.



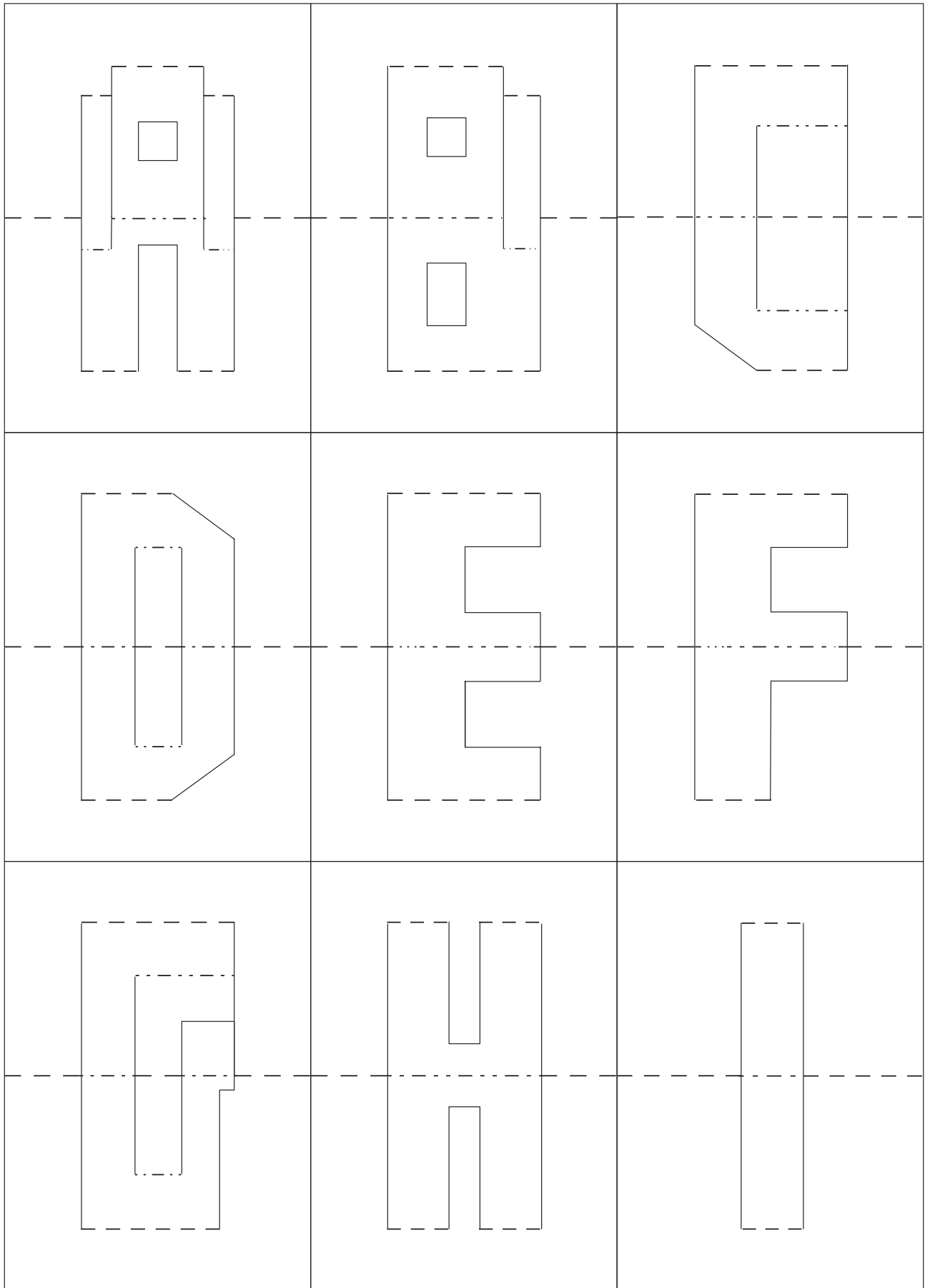
PEACE TREE CARD (PAGE 100)

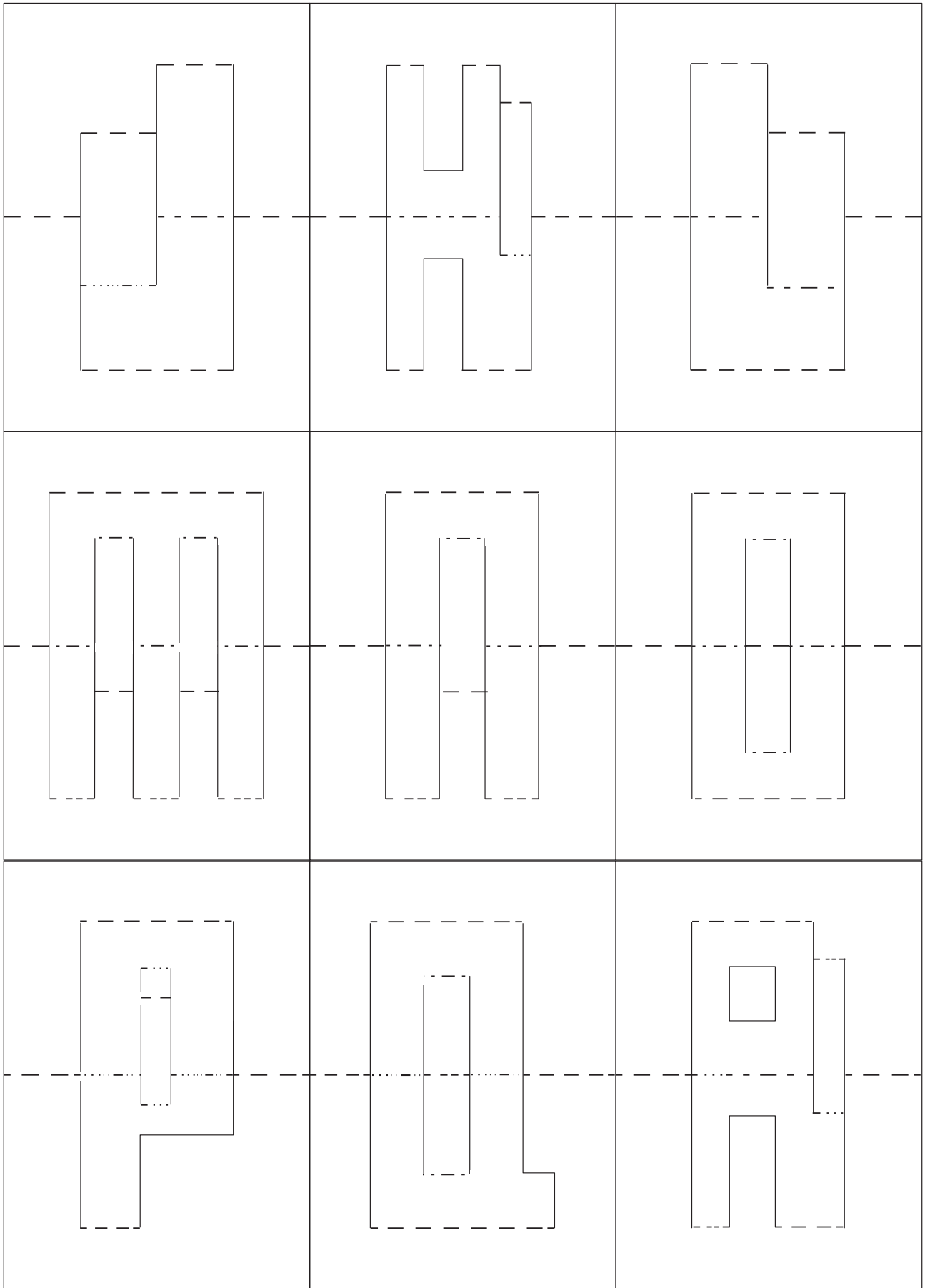
Print at 100% on the display side of your paper. **Note:** You will need one 11" x 17" sheet.

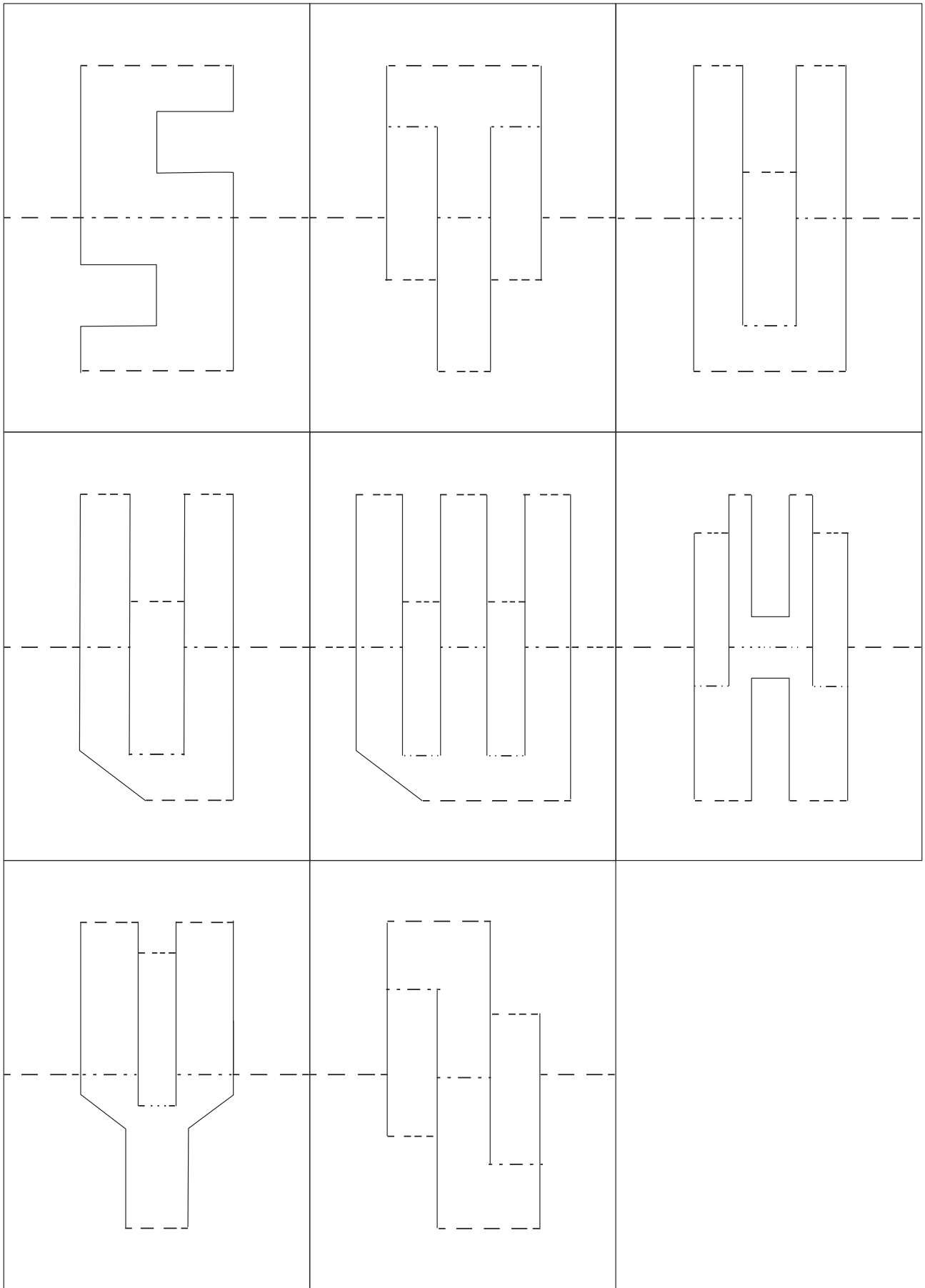


POP-UP ALPHABET (PAGE 116)

Print at 100% on the display side of your paper. **Note:** There are 26 template pieces for this project. You will need three 8½" × 11" sheets.



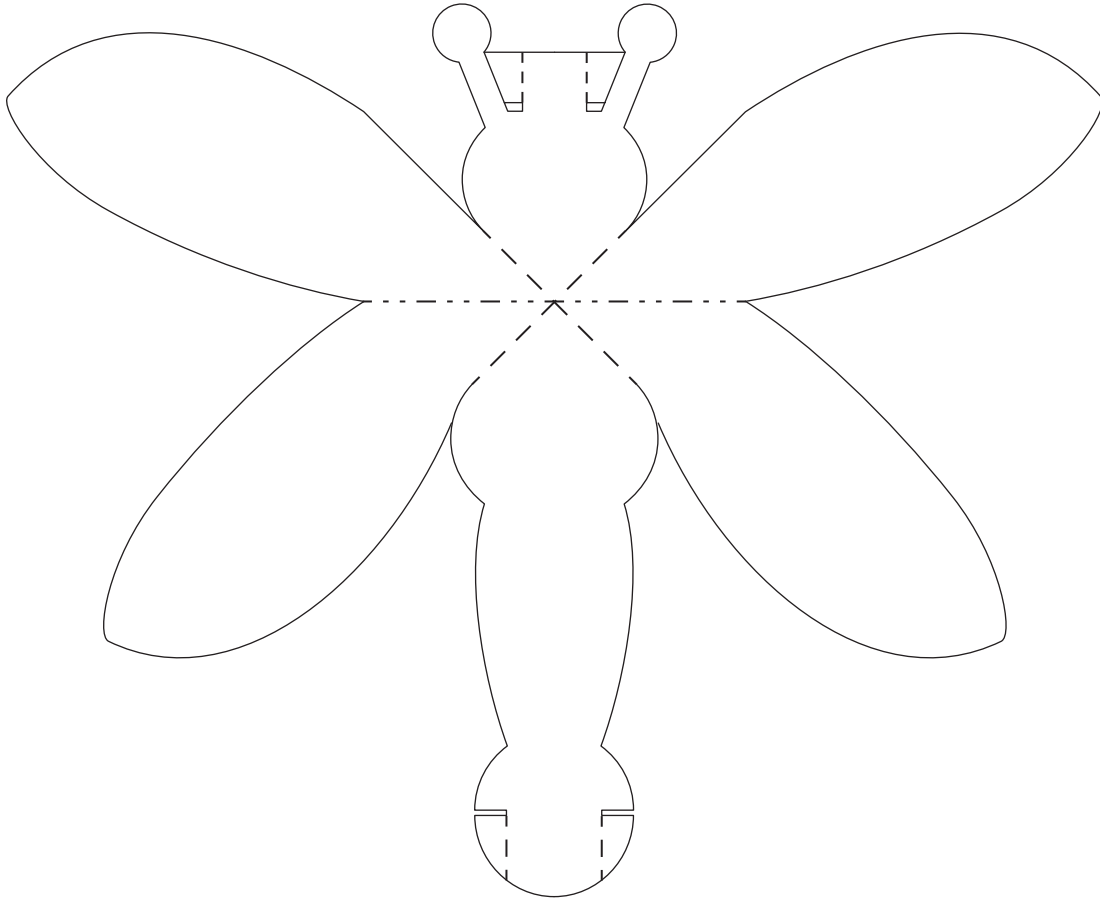




POP-UP DRAGONFLY (PAGE 178)

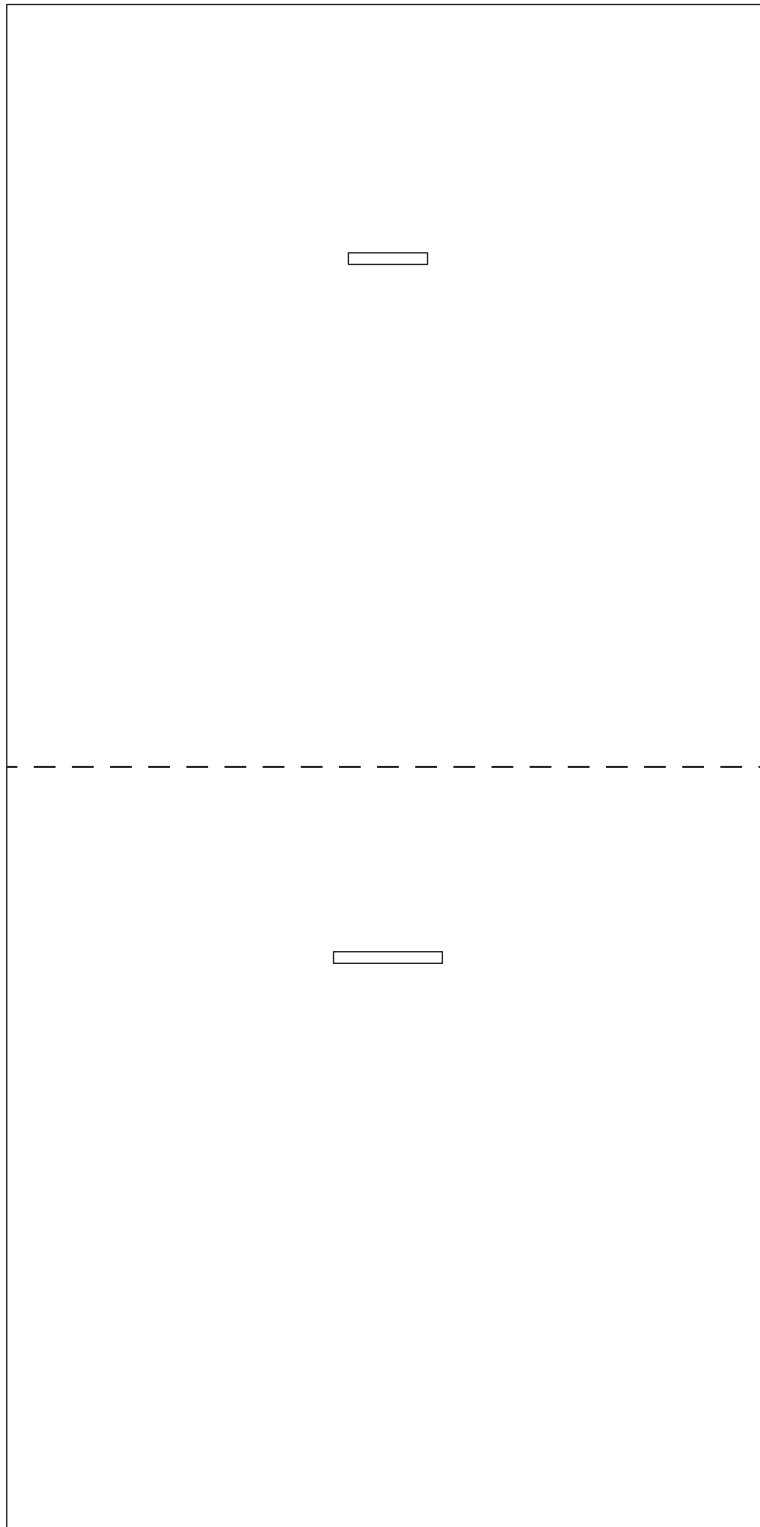
Print at 100% on the back side of your paper. **Note:** There are two template pieces for this project.

You will need two 8½" × 11" sheets.



POP-UP DRAGONFLY CARD (PAGE 178)

Print at 100% on the back side of your paper.

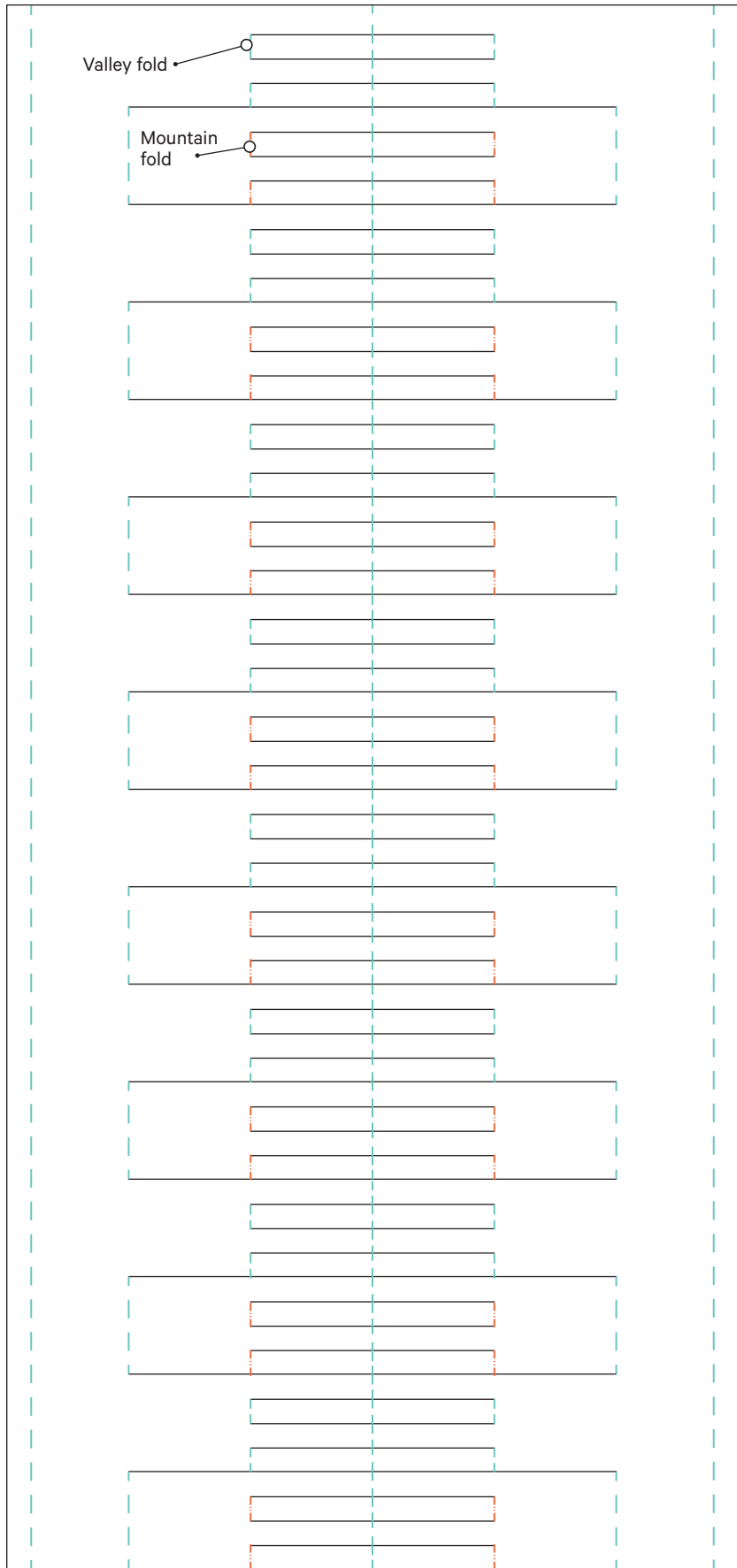


**RECONSTRUCTED
BAUHAUS EXERCISE
(PAGE 124)**

Print at 100% on the back side of
your paper.

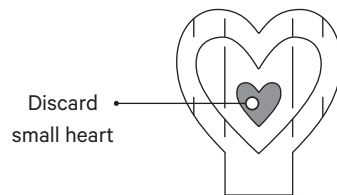
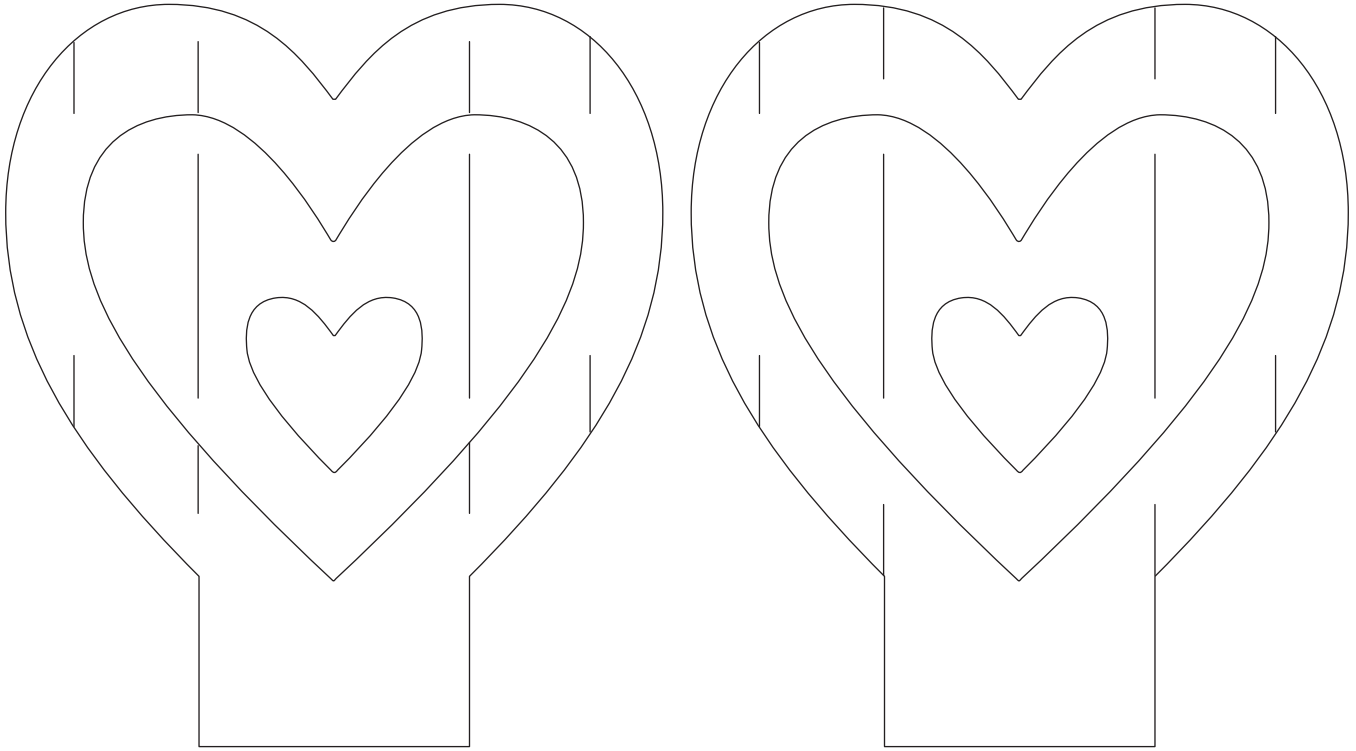
KEY

- Valley fold
- - - Mountain fold



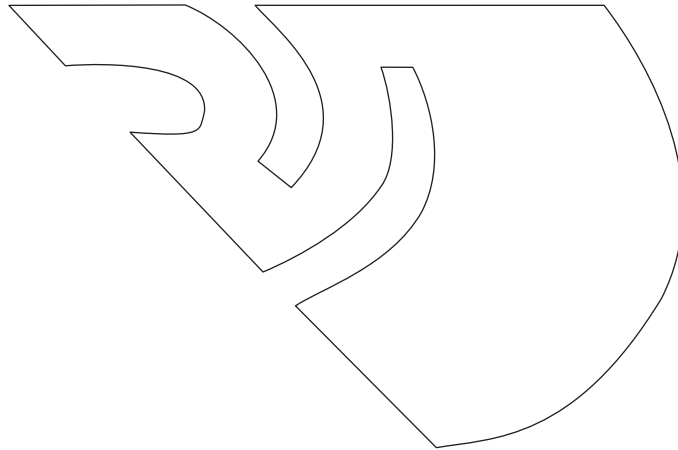
SLICE-FORM HEART (PAGE 120)

Print at 100% on the back side of your paper. **Note:** There are two template pieces for this project. Cut two of each template.



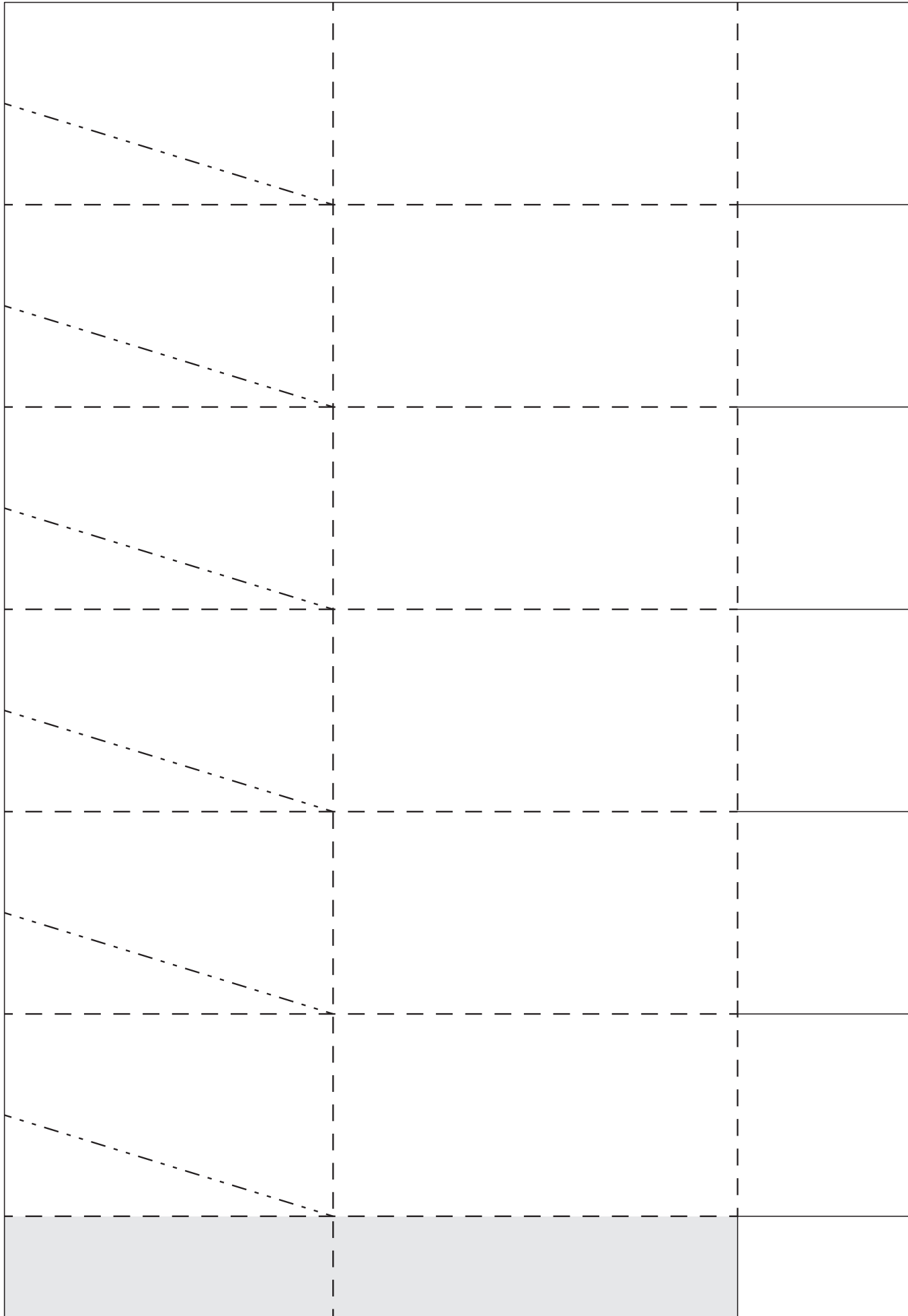
SPRING SHAMROCK (PAGE 104)

Print at 100% onto card stock.



STAR-TOP BOX (PAGE 170)

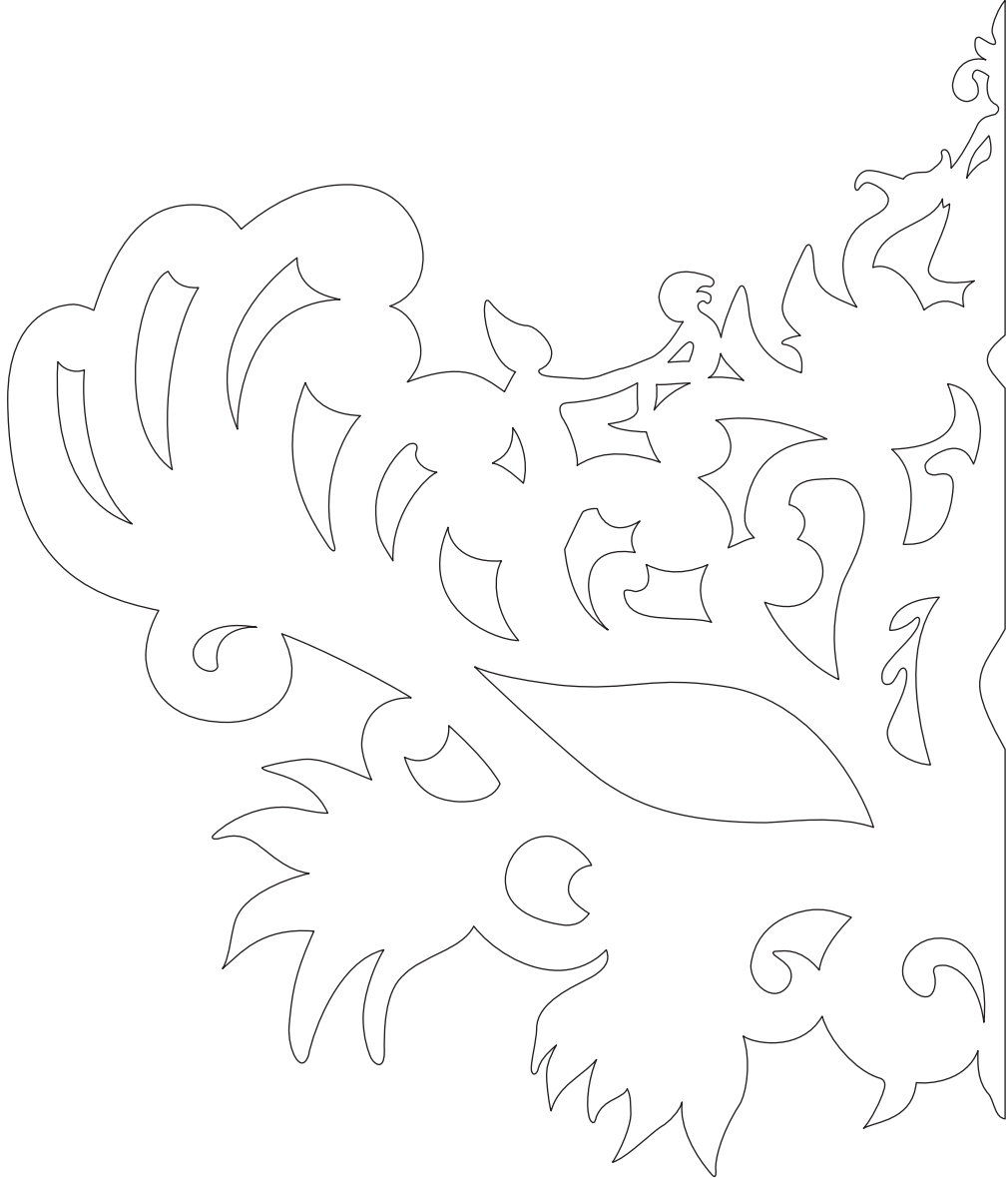
Print at 100% on the back side of your paper. **Note:** You will need one 11" x 17" sheet.



If you print this template on the back side of the project paper, as indicated here, you will need to apply double-sided tape (or other adhesive) on the opposite/front side of this tab.

STORYTELLING MASK (PAGE 128)

Print at 100% on a sheet of printer paper.



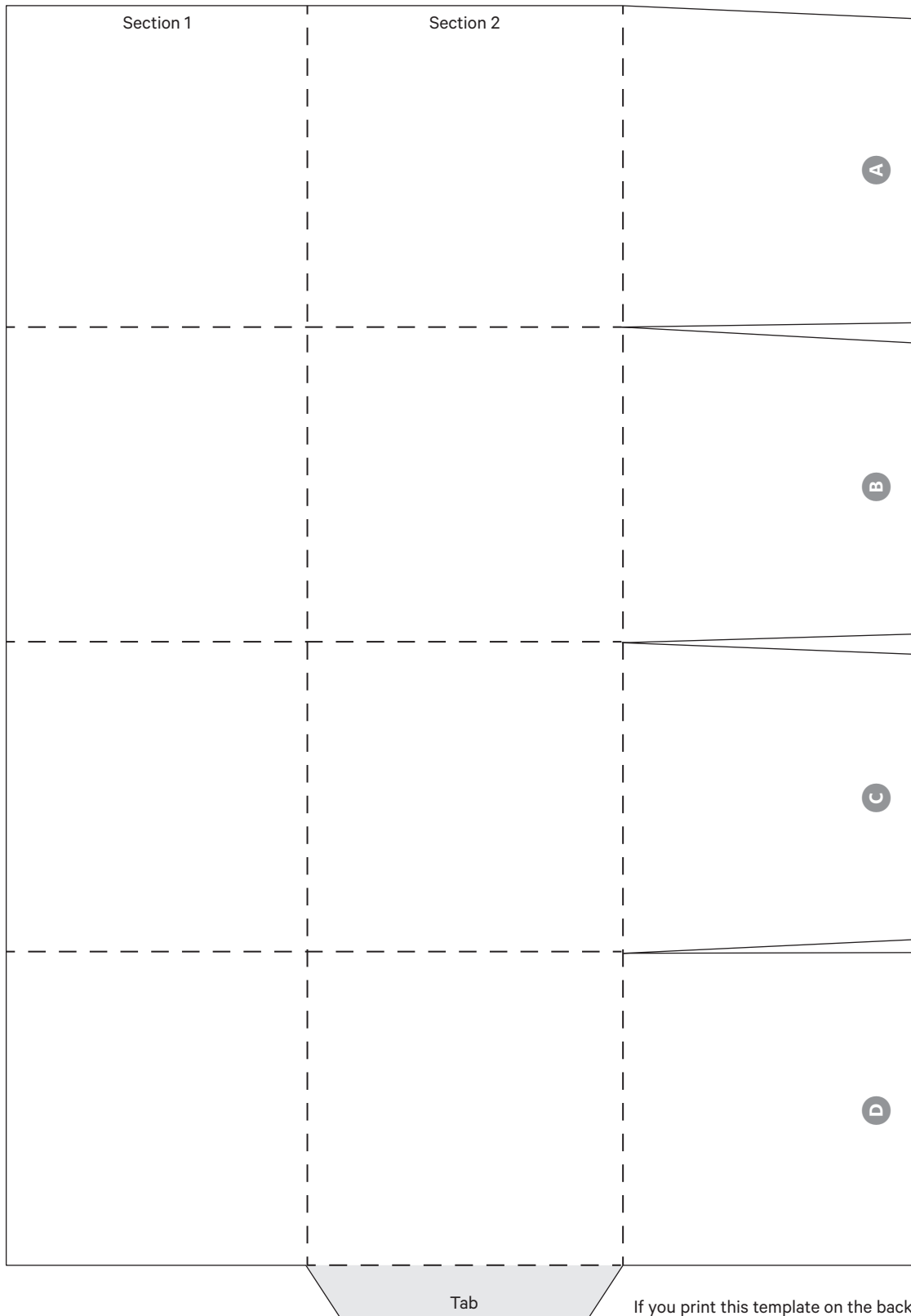
Place this edge on center fold.

TINY HOUSE (PAGE 186)

Print at 100% on the back side of your paper. **Note:** There are three template pieces for this project.

You will need two 8½" × 11" sheets.

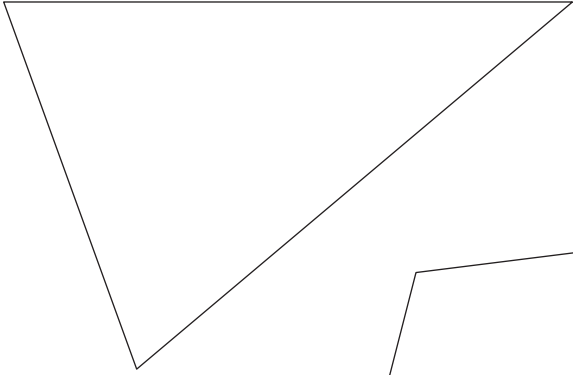
House piece



If you print this template on the back side of the project paper, as indicated above, you will need to apply double-sided tape (or other adhesive) on the opposite/front side of this tab.

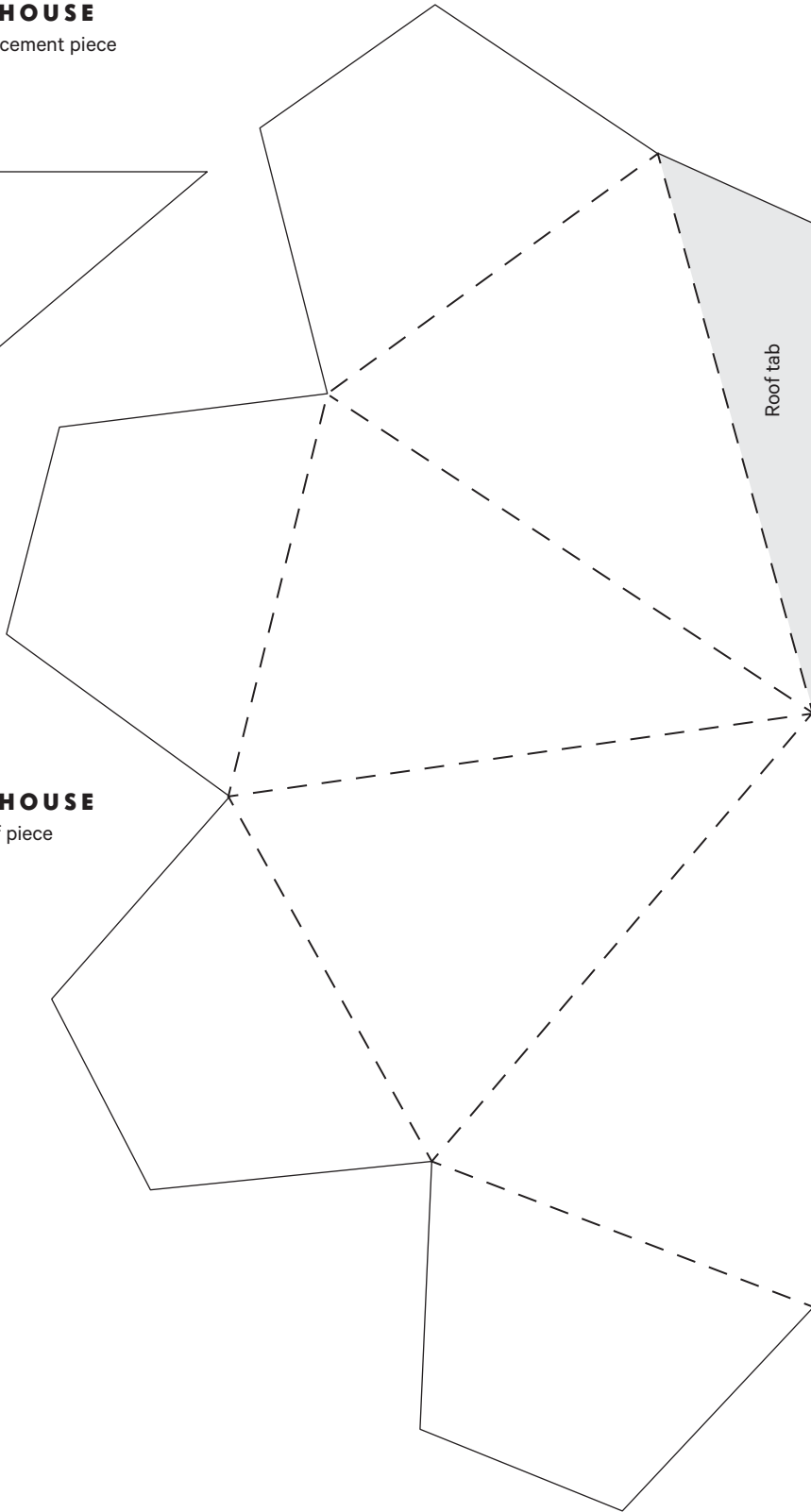
TINY HOUSE

Roof reinforcement piece



TINY HOUSE

Roof piece



If you are scoring on the back side of the project paper, as indicated, you will need to apply double-sided tape (or other adhesive) on the opposite/ front side of this tab.

TYVEK LANTERN (PAGE 62)

Print at 100% onto card stock.



VALENTINE LOVE NOTE (PAGE 48)

Print at 100% on the display side of your paper.

